



2017 16th National Animal Art Juried Exhibition

2017 16th Annual National Animal Art Juried Competition

AUGUST 27 - SEPTEMBER 29, 2017

Jaycee Park Center for the Arts, Irving TX

2017 marks the 16th year **Irving Art Association** has held a special competition on animal art. Entry is open to all legal residents of the U.S. in the contiguous 48 states, 18 and older.

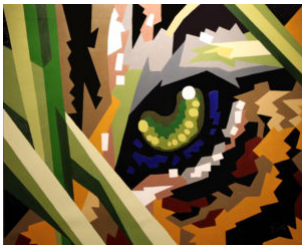
\$3,000 in awards

For questions about the exhibit, contact the Show Chair Linda Wood Shotwell at iaaexhibits@gmail.com.

Calendar:

- **Wednesday, July 26, 2017 Entry Deadline** all day
- Saturday, August 12 Notification of acceptance
- Mon. - Fri., Aug 21 - 25 Shipped entries due - instruction sent with notification
- Saturday, August 26 10:00 am - 2:00 pm Hand delivered entries, Jaycee Park Center for the Arts, 1975 Puritan Dr., Irving TX 75062
- Sunday, August 27, 2017 Exhibit opens to public
- Sunday, September 10 Exhibit Reception & Awards 2:00 - 4:00 pm
- Saturday, September 30 10:00 am - 2:00 pm Strike show & art pickup
- Oct. 7 - Nov. 26, 2017 Traveling Exhibit at the Irving Arts Center. *Local artists are invited to participate.*

History: In 2013 Irving Art Association's two venerable animal-art exhibits were combined into a single show: the **12th Annual Wildlife & Domestic Animal Juried Art Competition**. In 2012 the *Wildlife Juried Art Competition* was in its eleventh year, and the *Unconditional Love: Pet Fine Art Juried* in its fourth. In its 15th year, we shortened the title to **IAA National Animal Art Juried Competition**, reflecting the show's national status also.



BEST OF SHOW Steve Danner "Cats Eye" Acrylic



2016 IAA Award of Excellence Sheryl Hughes "I Can Still See You" Acrylic

ARTWORK REQUIREMENTS:

Any animal species will be considered as acceptable subject matter for works, both wildlife and domestic, including pets. Artwork must be done from personal photographs or observation. Concept, design and execution should be solely that of the artist. Work from another's copyrighted or published materials is not permitted.

Submitted works must have been completed within the last **2 years**, and not accepted into a previous IAA Animal Art Exhibit. Limit of three entries.

Media: Oil, Water Media, Mixed Media, Dry Media/Drawing & Photography

For complete entry rules see the [2017 IAA Animal Prospectus](#)

SUBMISSION & PAYMENT ONLINE

Submit your entries online through CaFÉ (www.callforentry.org). Or go directly to: https://www.callforentry.org/festivals_unique_info.php?ID=4508

Fee \$35 for up to three entries (IAA Members \$30).

Pay by credit card through CaFÉ or mail a check to Irving Art Association, P.O. Box 153581, Irving, TX 75015-3581 attn EXHIBITS, **Checks** must be received by July 26, 2017. Not a member? Join IAA at irvingartassociation.org/membership.

Upload options for image files through CaFÉ:

- **File format:** JPEG only
 - **File dimensions:** No smaller than 1920 pixels on the longest side
 - **File resolution:** 72 ppi/dpi (standard web resolution)
 - **File size:** 5 MB maximum
- HELP pages for entry using CaFÉ:** -including setting up a **FREE** account, how to apply, preparing your jpegs & more. Very friendly service - for help:

Contact CaFÉ™ support at cafe@westaf.org



JUROR: Patsy Lindamood



Learning from nationally and internationally recognized pastelists and wildlife artists, Patsy has emerged with a style uniquely her own, marked by strong, colorful, yet infinitely detailed compositions in a representational style. She has become a nationally award winning artist in her own right.

Her work derives from research and observation of creatures in their environments, in the wild whenever possible. Trips to state and national parks have provided great adventure and abundant inspiration. Wildlife also regularly visit her property in Huntsville, and it is not unusual to pass deer or roadrunners on her weekday routes.

Working in pastel, graphite, colored pencil, and watercolor or watercolor pencil, Lindamood's paintings are life-size, bold with color, rich with texture, and bursting with presence. She frequently paints on cradled artist boards, Pastelboard or Mylar.

For more about Patsy and her art, see her website at <http://www.lindamoodfineart.com>.

To receive notices about upcoming calls for entries, subscribe to
IAA email updates:

Subscribe to IAA Updates

PHOTO GALLERIES:

Reception photos: See IAA's [Photo Album on Photobucket](#) or [IAA's Facebook page](#)

WINNERS GALLERIES:

2008 ([Wildlife](#))

2009 ([Wildlife](#) & [Pet Art](#))

2010 ([Wildlife](#) & [Pet Art](#))

2011 ([Wildlife](#) & [Pet Art](#))

2012 ([Wildlife](#) & [Pet Art](#))

[2013](#)

[2014](#)

[2015](#)

[2016](#)